

# ***MAGNUM***

## **3000 lb.**

**With Strap Bearings**

# **Boat House**

## **INSTALLATION INSTRUCTIONS**

**Boat Lifts Unlimited  
Odenton, Maryland  
410-674-3100**

**Prior to installation:**

- a). To insure that the lift will operate properly, Adequate electricity should be available. Electricity will also be needed to install the lift.
- b). If available ceiling joists are to be used, insure that they are not cracked or show any signs of decay.
- c). We recommend that the ceiling joist be doubled up 2 x 10 timbers.
- d). Obtain any required local permits.

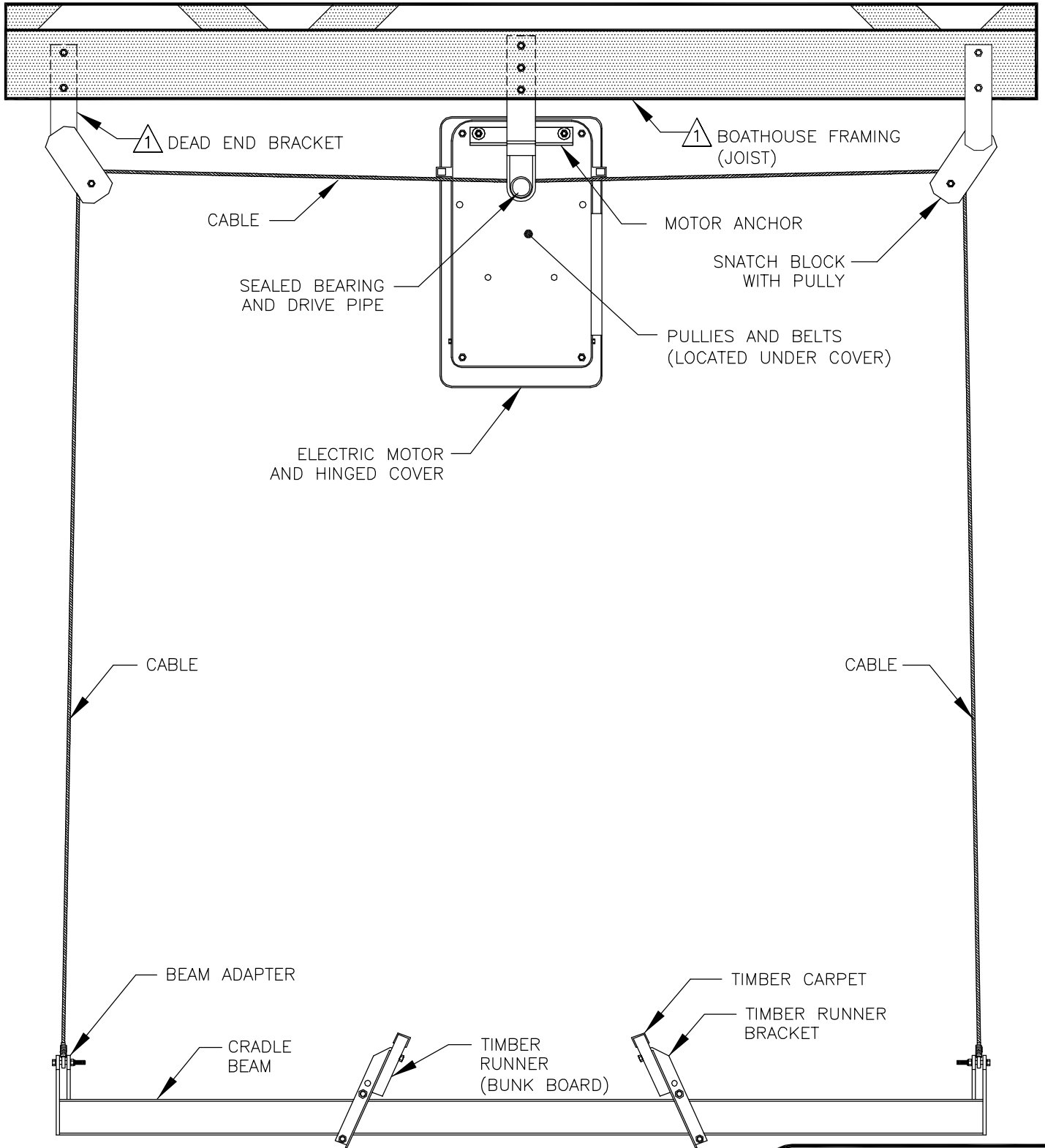
**DO NOT USE ANY POWER TOOL WHILE STANDING IN THE WATER. IF ELECTRICITY MUST BE USED NEAR THE WATER, INSURE THAT THE CIRCUIT IS PROTECTED BY A GROUND FAULT INTERRUPTER.**

**"BOATHOUSE" MODEL LIFT: 3,000 LB  
PARTS LIST**

<b>NO.</b>	<b>ITEM DESCRIPTION</b>	<b>QTY</b>
1	3/4 HP MOTOR WITH LONG CORD 15' AND BOXED SWITCH	1
2	GEAR PLATE	1
3	HINGED COVER	1
4	OVERHEAD MOTOR ANCHOR BRACKET	1
5	BEARING PIPE CARRIER	2
6	BEARING PIPE CARRIER BRACKETS	4
8	SPACER SLEEVE	1
9	10" PULLEY	1
10	4L360 BELT	1
11	5/8" BORE PLAIN SHEAVES	4
13	SNATCH BLOCKS	4
14	DEAD END BRACKETS	4
15	1/4" x 20' CABLES WITH NICO AND THIMBLE	4
16	4" CRADLE BEAMS (CRADLE LIFT ONLY)	2
17	ROLLS 14' CARPET (CRADLE LIFT ONLY)	2
35	TIMBER RUNNER BRACKET	8
18	3/8" x 2 1/2" GALVANIZED CARRAIGE BOLTS (CRADLE LIFT ONLY)	8
19	3/8" GALVANIZED NUTS (CRADLE LIFT ONLY)	8
20	14' WEIGHTED SLINGS (SLING LIFT ONLY—NOT SHOWN)	2
<b>HARDWARE</b>		
21	1/2" x 1" GALVANIZED CARRAIGE BOLTS	16
22	1/2" x 1 1/2" GALVANIZED BOLTS	2
23	1/2" x 2" GALVANIZED BOLTS	2
24	1/2" GALVANIZED NUTS	28
25	1/2" GALVANIZED LOCK WASHERS	2
26	1/2" GALVANIZED FLAT WASHERS	10
27	3/16" WIRE CLIPS (CABLE CLAMPS)	4
28	5/8" x 3" GALVANIZED BOLTS	8
29	5/8" x 6" GALVANIZED BOLTS	16
30	5/8" GALVANIZED NUTS	24
31	STAINLESS STEEL HARDWARE COVERPAK	4
32	5/8" x 3" STAINLESS STEEL BOLTS	4
33	5/8" STAINLESS STEEL LOCK NUTS	8
34	5/8" GALVANIZED WASHERS	16
35	5/8" x 1-1/2" GALVANIZED HEX BOLTS	4
36	5/8" GALVANIZED LOCK WASHERS	4

GENERAL NOTES:

**⚠ IMPORTANT**—JOIST SHOULD BE ADEQUATE TO SUPPORT THE LOAD, WE RECOMMEND 2 x 10' DIMENSIONAL LUMBER. DEAD END BRACKETS SHOULD BE SECURELY ATTACHED TO THE BOATHOUSE FRAMING.

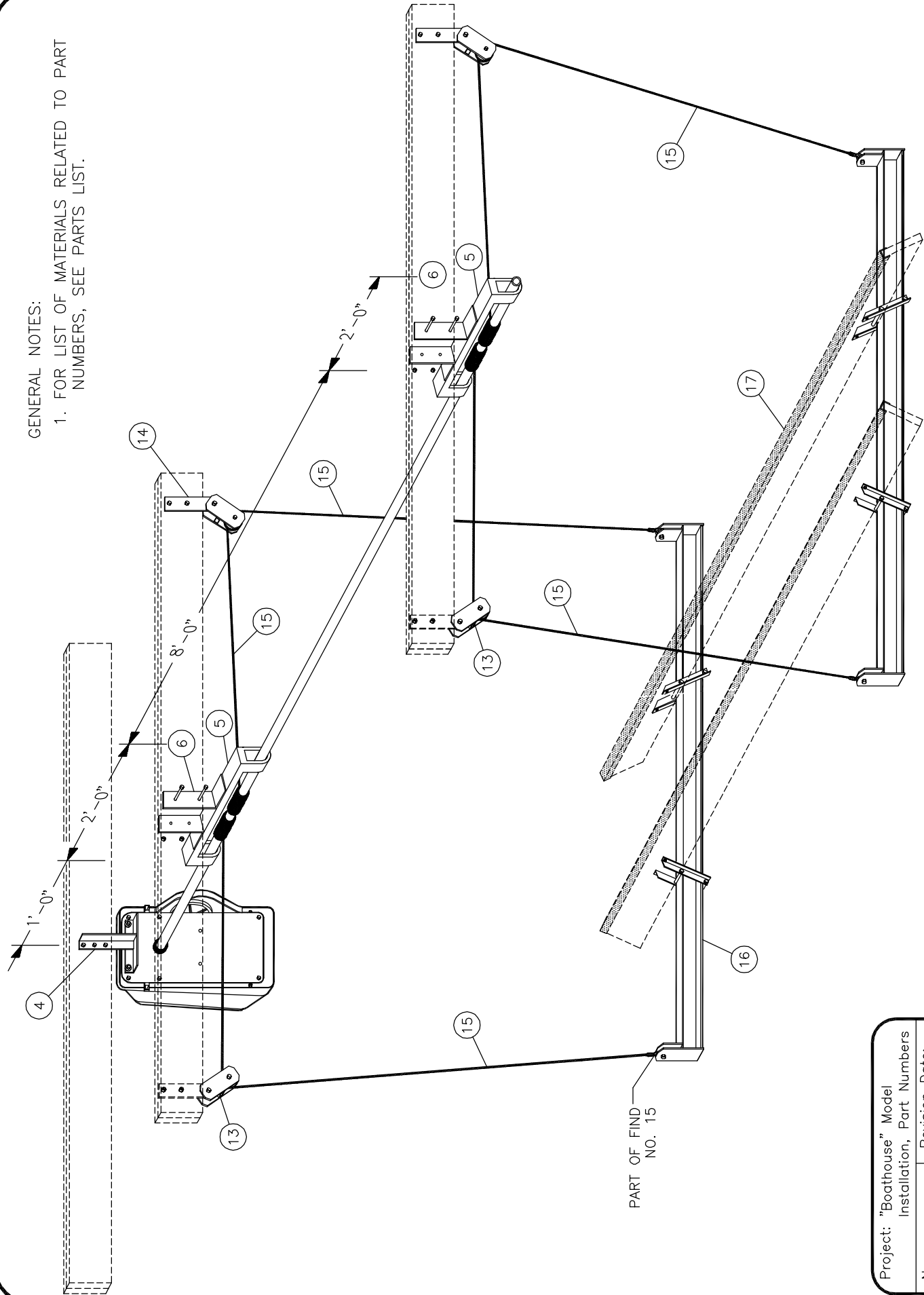


**MODEL 3,000 LB LIFT**

Project: "Boathouse" Part Names (Model 3,000)		
No.: 001	Revision Date: 06-15-12	
Scale: None	Date: 05-31-01	Sheet: 1 of 1

**GENERAL NOTES:**

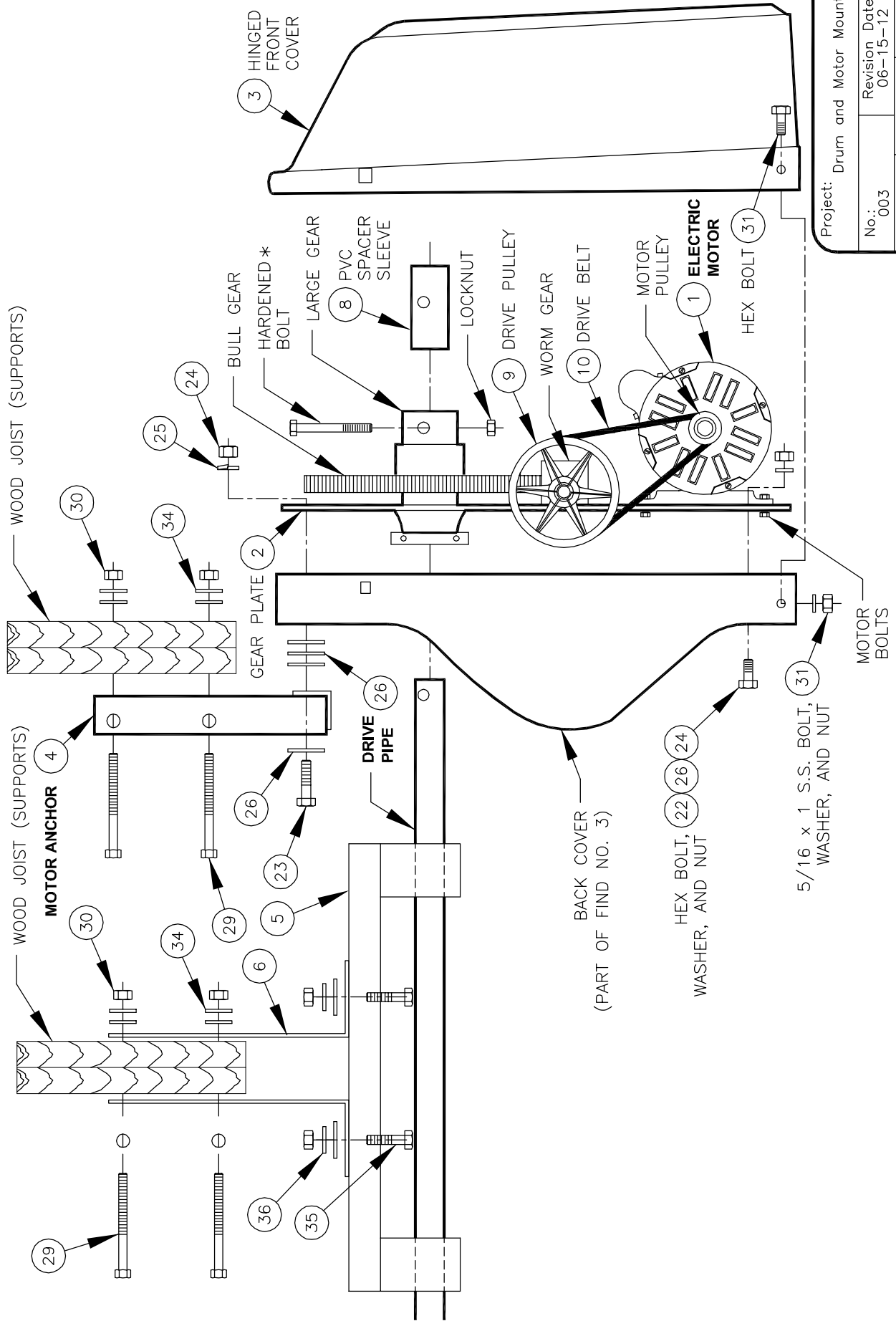
1. FOR LIST OF MATERIALS RELATED TO PART NUMBERS, SEE PARTS LIST.



Project: "Boathouse" Model			
Installation, Part Numbers			
No.: 002	Revision Date:	06-15-12	
Scale: None	Date:	06-06-01	
		Sheet:	1 of 1

**GENERAL NOTES:**

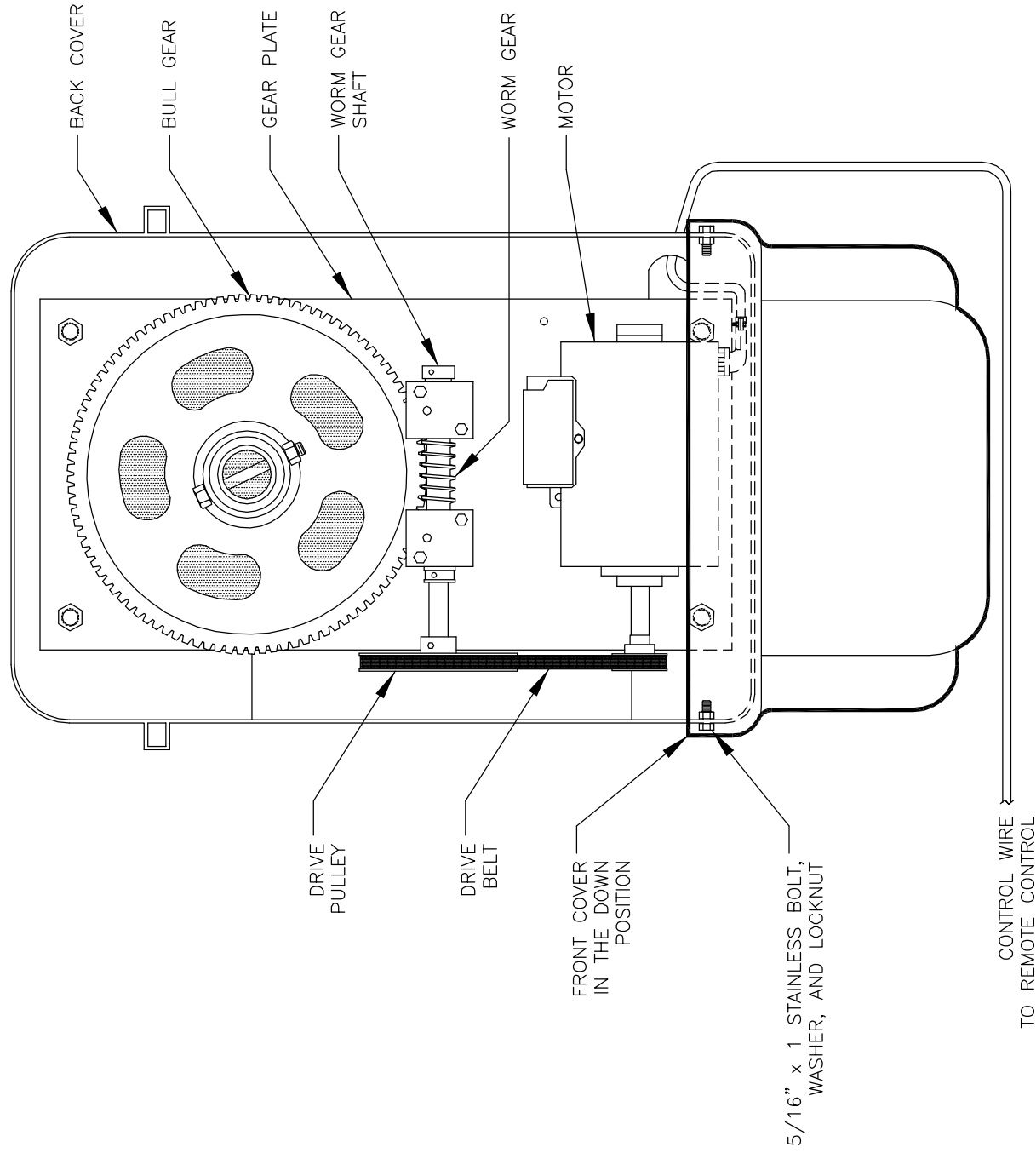
1. \* CAUTION: INSTALL ONLY THE HARDENED BOLT SUPPLIED WITH THE GEAR ASSEMBLY.
2. FOR LIST OF MATERIALS RELATED TO PART NUMBERS, SEE PARTS LIST.



Project: Drum and Motor Mount	
No.: 003	Revision Date: 06-15-12
Scale: None	Date: 06-04-12
	Sheet: 1 of 1

**GENERAL NOTES:**

1. SEE DRAWING NO. 003 (DRUM AND MOTER MOUNT) FOR A SIDE VIEW OF MOTOR AND MOTOR HOUSING.

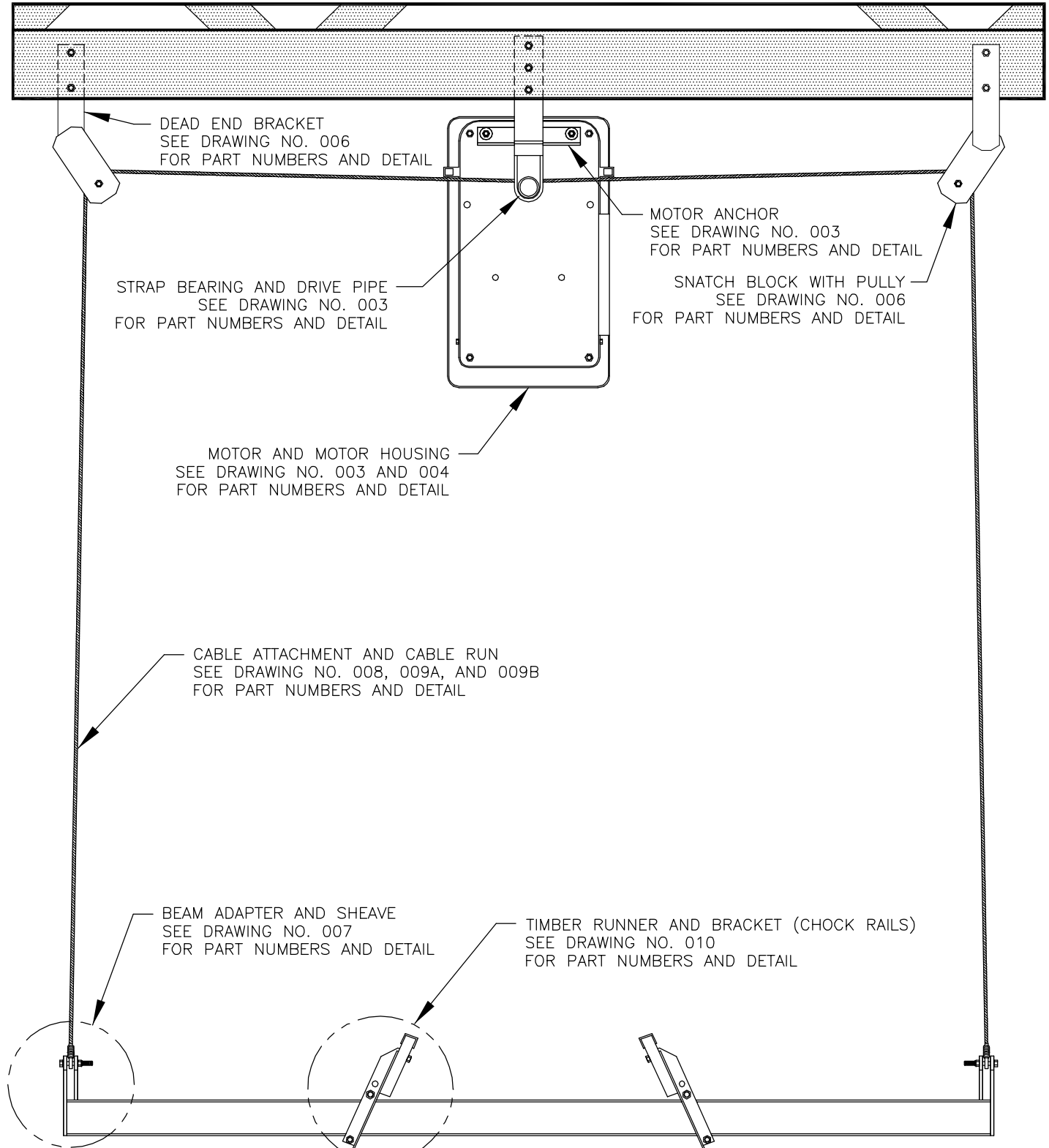


Project: Motor and Motor Housing			
No.: 004	Revision		Date:
Scale: None	Date: 06-04-12	Sheet: 1 of 1	

**MOTOR HOUSING - FRONT VIEW**  
(COVER DOWN)

GENERAL NOTES:

1. FOR A DETAIL DRAWING OF VIEW CALLED OUT, GO TO SPECIFIED DRAWING.



DEAD END BRACKET  
SEE DRAWING NO. 006  
FOR PART NUMBERS AND DETAIL

STRAP BEARING AND DRIVE PIPE  
SEE DRAWING NO. 003  
FOR PART NUMBERS AND DETAIL

MOTOR AND MOTOR HOUSING  
SEE DRAWING NO. 003 AND 004  
FOR PART NUMBERS AND DETAIL

MOTOR ANCHOR  
SEE DRAWING NO. 003  
FOR PART NUMBERS AND DETAIL

SNATCH BLOCK WITH PULLEY  
SEE DRAWING NO. 006  
FOR PART NUMBERS AND DETAIL

CABLE ATTACHMENT AND CABLE RUN  
SEE DRAWING NO. 008, 009A, AND 009B  
FOR PART NUMBERS AND DETAIL

BEAM ADAPTER AND SHEAVE  
SEE DRAWING NO. 007  
FOR PART NUMBERS AND DETAIL

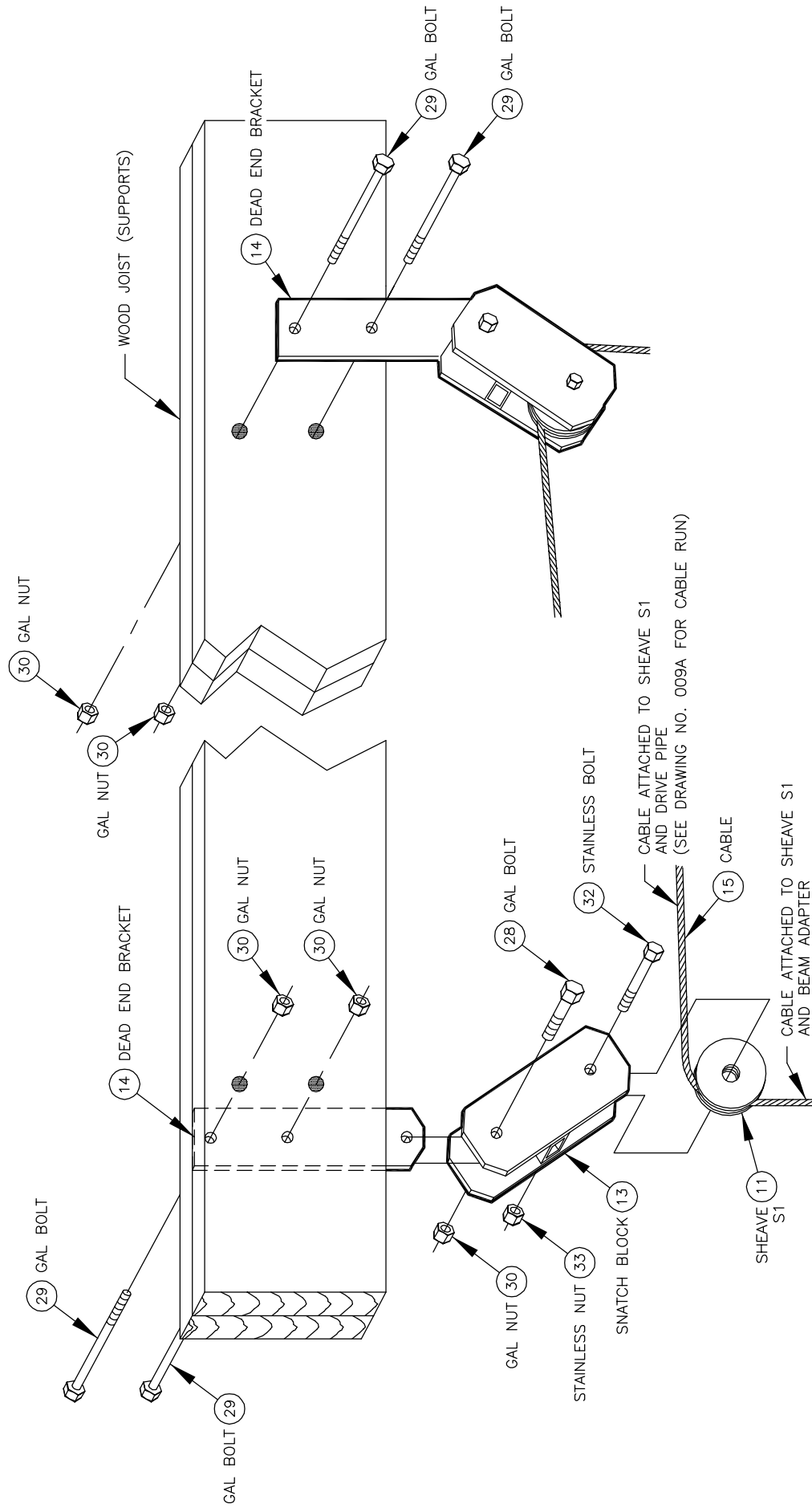
TIMBER RUNNER AND BRACKET (CHOCK RAILS)  
SEE DRAWING NO. 010  
FOR PART NUMBERS AND DETAIL

Project: Key To Detail Drawings

No.: 005	Revision Date: 06-15-12	
Scale: None	Date: 06-12-01	Sheet: 1 of 1

GENERAL NOTES:

1. FOR LIST OF MATERIALS RELATED TO PART NUMBERS, SEE PARTS LIST.

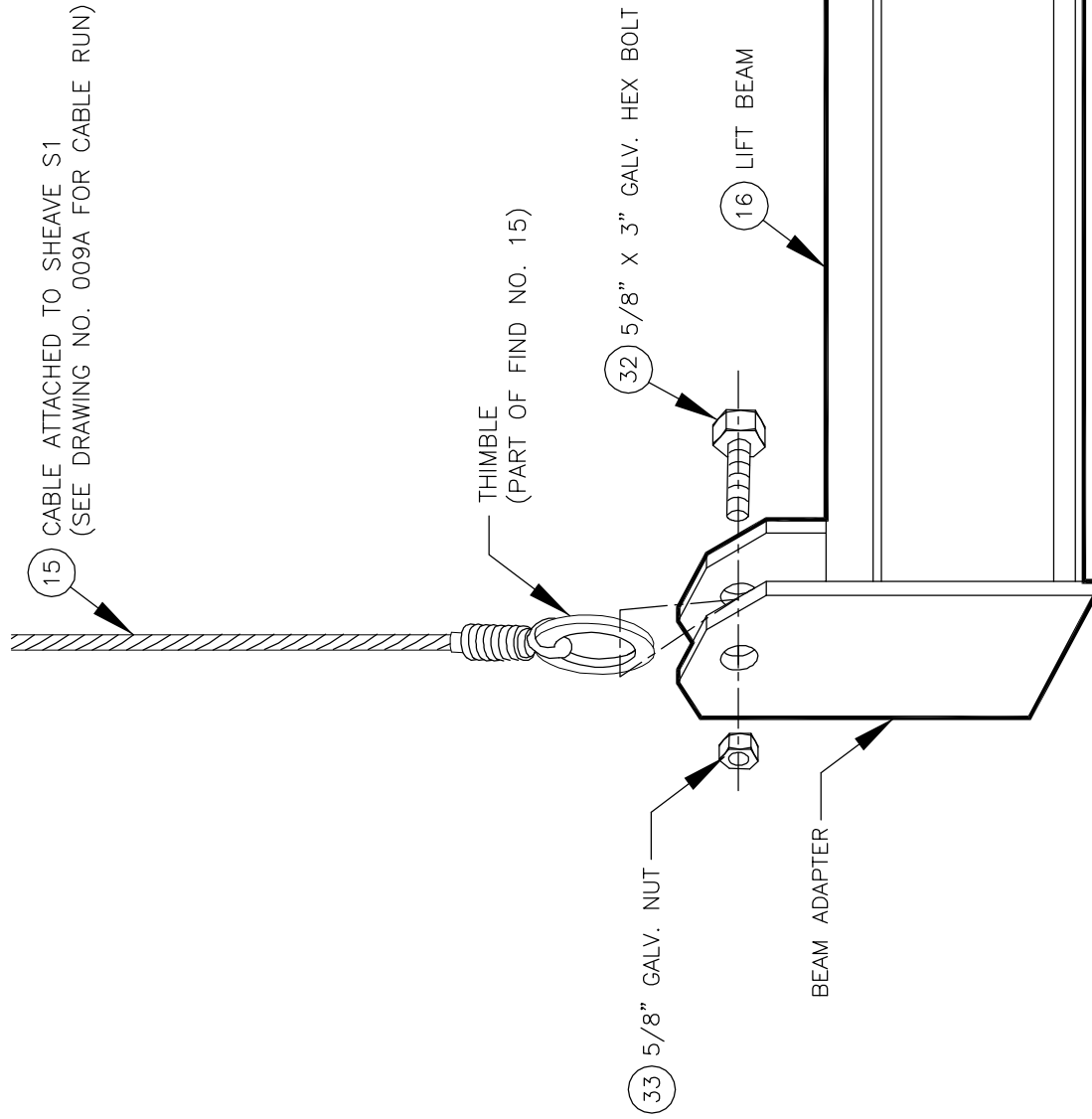


Project: Snatch Block and Hanger Bracket Detail	
No.: 006	Revision Date: 06-04-12
Scale: None	Date: 07-19-01
	Sheet: 1 of 1



GENERAL NOTES:

- 1. FOR LIST OF MATERIALS RELATED TO PART NUMBERS, SEE PARTS LIST.



**MODEL 3,000**

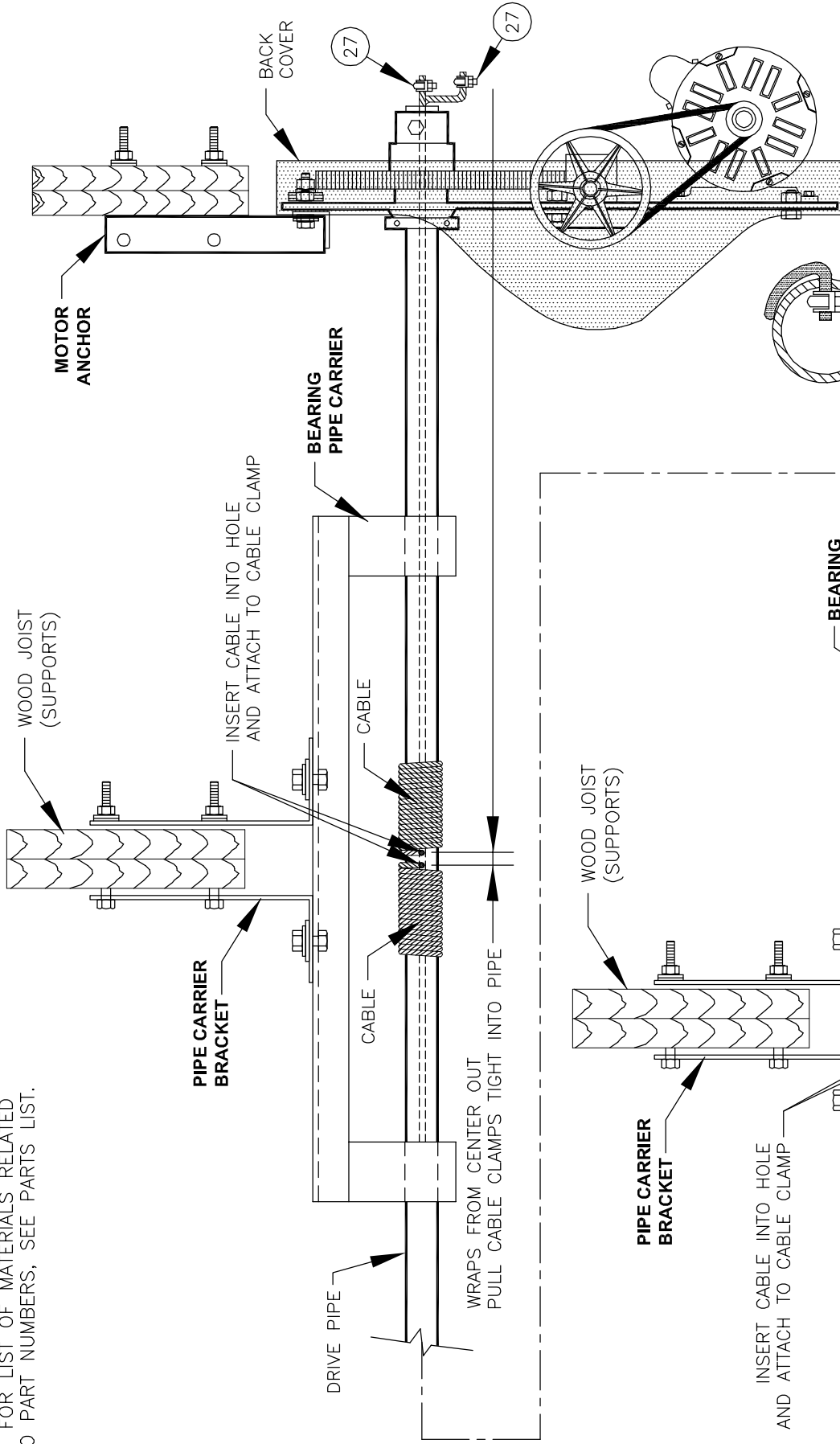
Project: Beam Adapter Detail

No.: 007      Revision Date: 06-15-12

Scale: None      Date: 06-04-12      Sheet: 1 of 1

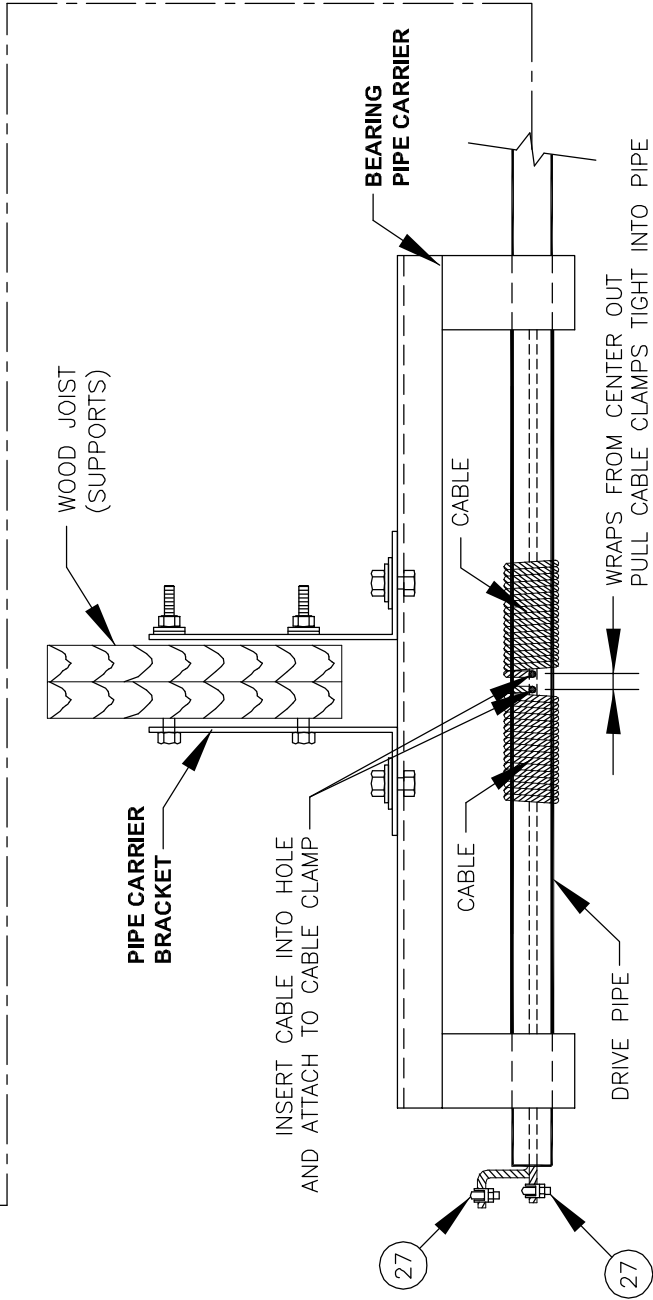
**GENERAL NOTES:**

1. FOR LIST OF MATERIALS RELATED TO PART NUMBERS, SEE PARTS LIST.



**SECTION VIEW**

CABLE CLAMP IS PULLED TIGHT INTO DRIVE PIPE



**CABLE ATTACHMENT**

CABLE CLAMP (SEE SECTION VIEW)

Project: Cable Connections Assembly Detail and Cable Attachment

No.: 008

Revision Date: 06-15-12

Scale: None

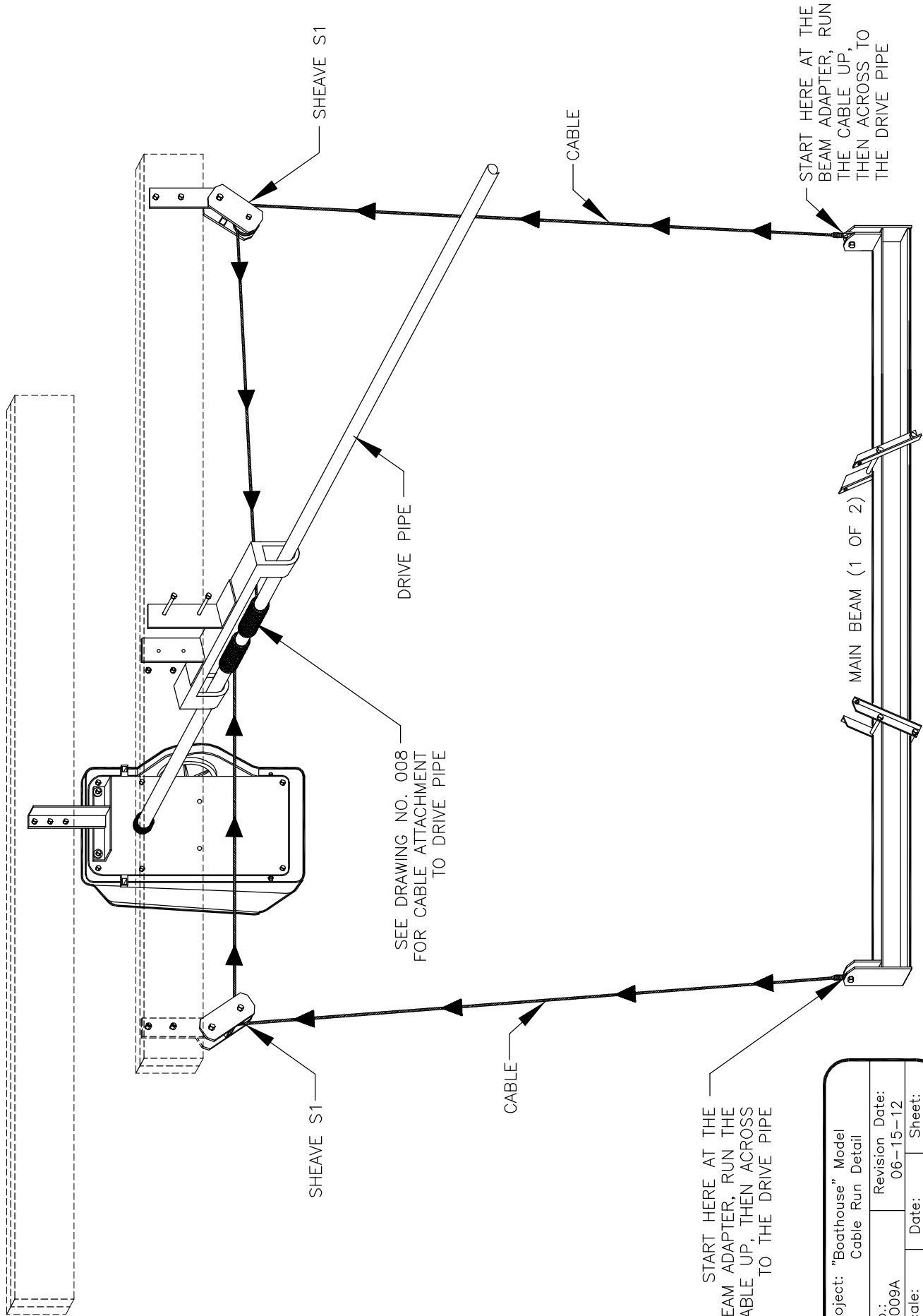
Date: 06-04-01

Sheet: 1 of 1

**BOAT LIFTS UNLIMITED, INC.**

**GENERAL NOTES:**

1. ENOUGH CABLE IS SUPPLIED WITH THE LIFT TO LOWER THE MAIN BEAM 20' BELOW THE SHEAVE S1 BOLT. IF A GREATER AMOUNT OF DROP IS REQUIRED, CALL YOUR LIFT SUPPLIER TO ACQUIRE LONGER CABLES.



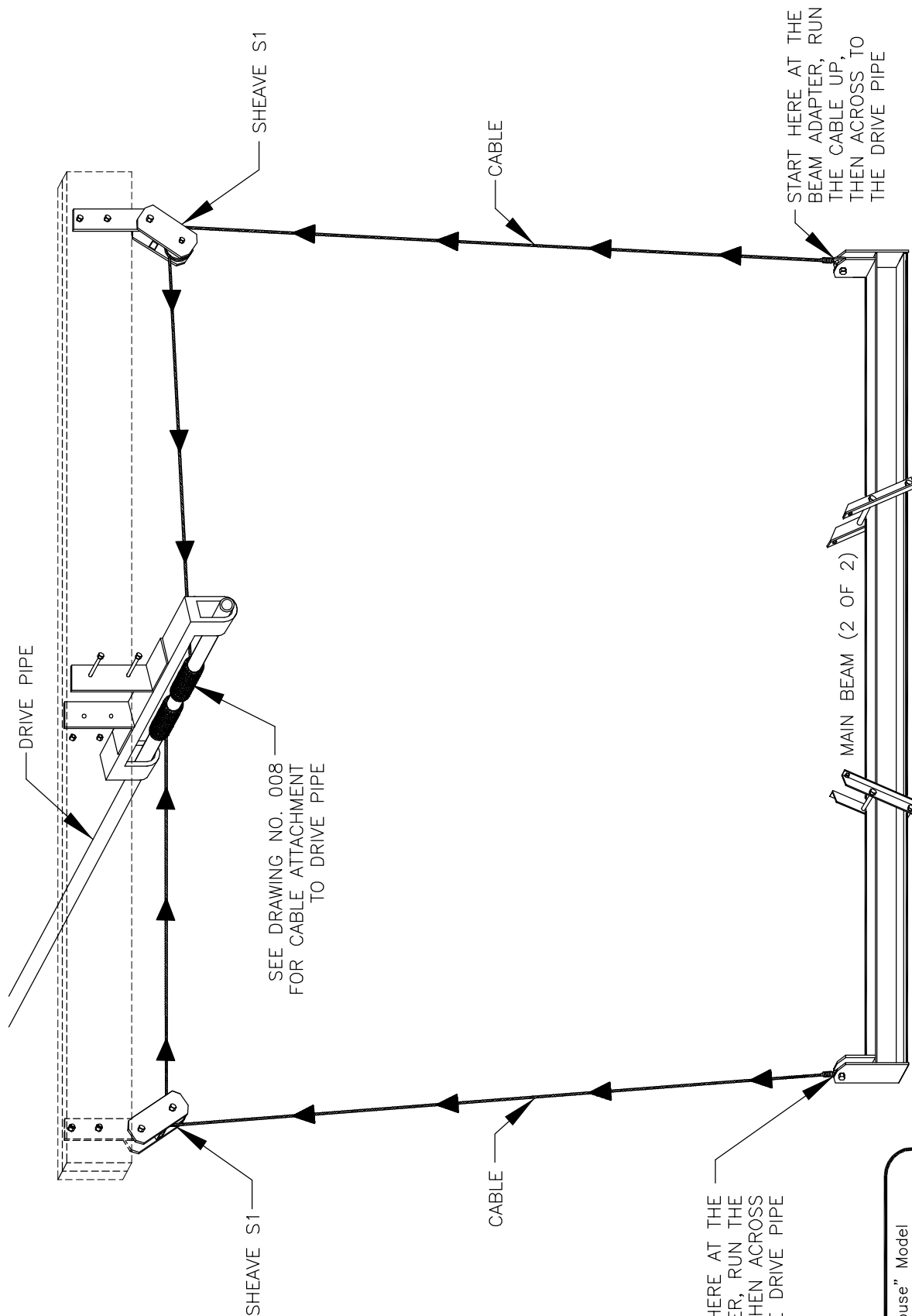
START HERE AT THE BEAM ADAPTER, RUN THE CABLE UP, THEN ACROSS TO THE DRIVE PIPE

Project: "Boathouse" Model Cable Run Detail			
No.:	009A	Revision Date:	06-15-12
Scale:	None	Date:	06-07-01
		Sheet:	1 of 2

**BOAT LIFTS UNLIMITED, INC.**

**GENERAL NOTES:**

1. ENOUGH CABLE IS SUPPLIED WITH THE LIFT TO LOWER THE MAIN BEAM 20' BELOW THE SHEAVE S1 BOLT. IF A GREATER AMOUNT OF DROP IS REQUIRED, CALL YOUR LIFT SUPPLIER TO ACQUIRE LONGER CABLES.



START HERE AT THE BEAM ADAPTER, RUN THE CABLE UP, THEN ACROSS TO THE DRIVE PIPE

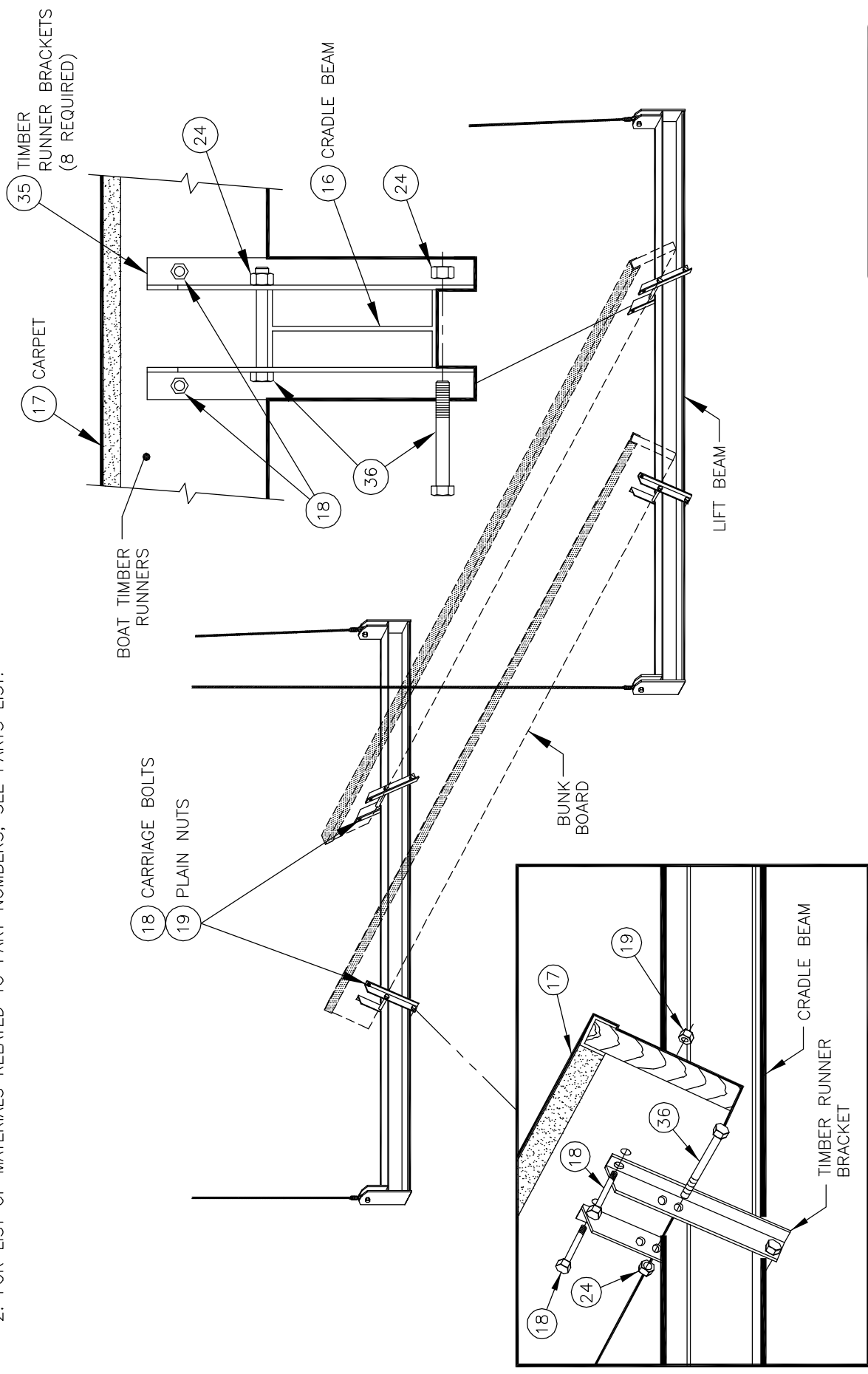
START HERE AT THE BEAM ADAPTER, RUN THE CABLE UP, THEN ACROSS TO THE DRIVE PIPE

Project: "Boathouse" Model Cable Run Detail			
No.:	009B	Revision Date:	06-15-12
Scale:	None	Date:	06-07-01
		Sheet:	2 of 2

**BOAT LIFTS UNLIMITED, INC.**

GENERAL NOTES:

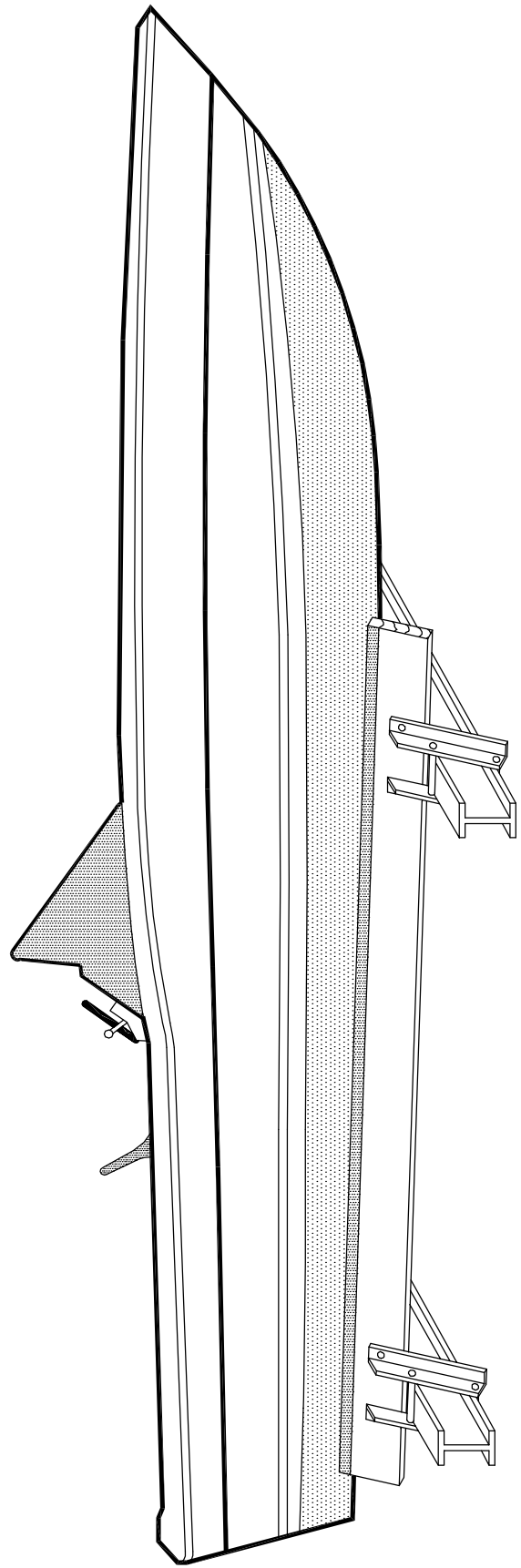
1. BUNK BOARDS, IF NOT SUPPLIED, SHOULD BE 2" x 8" OR 2" x 10" DIMENSIONAL LUMBER.
2. FOR LIST OF MATERIALS RELATED TO PART NUMBERS, SEE PARTS LIST.



Project: Chock Rails Assembly Detail	
No.: 010	Revision Date: 06-15-12
Scale: None	Date: 06-11-01
Sheet: 1	of 1

GENERAL NOTES:

- 1. FOR OPTIMUM PERFORMANCE, EQUAL WEIGHT DISTRIBUTION IS REQUIRED OVER BOTH CRADLE ARMS.
- 2. TO OBTAIN EQUAL WEIGHT DISTRIBUTION:
  - A. USE BALANCE POINT OF BOAT.
  - B. DO NOT USE CENTER OF BOAT LENGTH.



**SIDE VIEW OF BOAT**

Project: Instructions For	
Weight Distribution	
No.: 011	Revision Date: 06-04-12
Scale: None	Date: 06-11-01
	Sheet: 1 of 1